



Schwarzkopf[®]
PROFESSIONAL

BLONDME[®]

BLONDE TONING



COLOR APPLICATION:

1. Start off by sectioning the hair as shown. Mix BLONDME Bond Enforcing Premium Clay Lightener with BLONDME Premium Developer 12% (40 Vol.) Mixing Ratio: 1:1.5.

2. Begin the application by loading the product in the middle part of the section, then feather upwards, and gradually saturate the product towards the ends.

3. Continue with the product application section by section, focusing on the mid-lengths and ends throughout the entire look. Once application is complete, leave in for up to 45 minutes - check development at regular intervals

REMOVAL:

4. Use BLONDME Keratin Restore Bonding Shampoo and rinse thoroughly. Apply BLONDME Keratin Restore Bonding Mask for up to 5 minutes to rebalance the hair after the lightening process.

TONER APPLICATION:

5. Tone the hair using BLONDME Blonde Toning Biscuit + Sand (1:1) with BLONDME Premium Developer 2% (7 Vol.) Developer. Mixing ratio 1:1. Apply with an applicator bottle. Start at the regrowth leaving out the front section. After 5 minutes work through mid-lengths and ends. For the last 5 minutes work into the front section. Total development time 15 minutes to create the perfect blend.

FINAL CARE SERVICE:

6. Rinse. **Do not shampoo after toning!** Apply BLONDME Keratin Restore Bonding Mask and leave for up to 5 minutes.

Use BLONDME Blonde Toning to ensure optimal blonde results - for balanced neutralization & sophisticated tone enhancement!



LOOK CREATED BY JACK HOWARD

@JACKHOWARDCOLOR

LEADING BALAYAGE EDUCATOR

BLONDME Global Ambassador

- Color World Commercial Genius 2019
- BHBA Social Stylist 2019

Together. A passion for hair.[®]

BLONDME[®]

BLONDE TONING



COLOR APPLICATION:

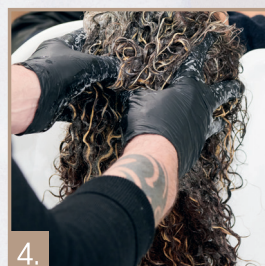
1. Start off by sectioning the hair as shown. Mix BLONDME Bond Enforcing Premium Lightener 9+ with BLONDME Premium Developer 6% (20 Vol.) Mixing Ratio: 1:2.



2. Start the application at the nape area, alternating weaves and slices. Continue the application technique with diagonal sections at the contours up to the top panel.



3. Leave in for up to 45 minutes (check development at regular intervals), remove the foils and rinse.



REMOVAL:

4. Shampoo with BLONDME Keratin Restore Bonding Shampoo and apply BLONDME Keratin Restore Bonding Mask for up to 5 minutes to rebalance the hair after the lightening process.



TONER APPLICATION:

5. Regrowth (COLOR 1): To create a shadow roots effect, start the toner application at the regrowth using BLONDME Deep Toning shades Milk Chocolate + Brown Mahogany (3:1) with BLONDME Premium Developer 2% (7 Vol.) Developer. Mixing ratio: 1:1.



6. Mid-lengths & Ends (COLOR 2): Apply BLONDME Blonde Toning Ice-Irisé with BLONDME Premium Developer 2% (7 Vol.) onto mid-lengths and ends for a perfect neutralization. Ensure that Color 1 and Color 2 are well blended where they meet on the hair. Mixing ratio: 1:1. Leave to develop for up to 20 minutes.



FINAL CARE SERVICE:

7. Rinse. Do not shampoo after toning! Apply BLONDME Keratin Restore Bonding Mask and leave for up to 5 minutes.

Use BLONDME Blonde Toning to ensure optimal blonde results - for balanced neutralization & sophisticated tone enhancement!



LOOK CREATED BY JACK HOWARD

@JACKHOWARDCOLOR

LEADING BALAYAGE EDUCATOR

BLONDME Global Ambassador

- Color World Commercial Genius 2019
- BHBA Social Stylist 2019